

# TURN SERIES

PRODUCT INFO



ferm  
L I V I N G





Turn Sofa 2-Seater — Fabric: Bouclé Off-white

TURN SOFA - 2-SEATER

Design by ferm LIVING in collaboration with Says Who

PRODUCT DETAILS

Manufactured in Lithuania.  
Registered design

DIMENSIONS

Height: 73.5 cm / 28.9 in  
Width: 160 cm / 63 in  
Depth: 75.5 cm / 29.7 in  
Seat height: 42 cm / 16.5 in  
Seat depth: 55 cm / 21.7 in  
Backrest height: 31.5 cm / 12.4 in  
Weight: 48 kg

MATERIALS & CONSTRUCTION

Backrest/seat: High resilience polyurethane foam on beech and plywood inner construction with No-Sag spring  
Frame: Powder coated steel  
Glides: Plastic glides

CARE

Please see Care & Maintenance guide on [www.fermliving.com](http://www.fermliving.com)

PACKSIZE

1

TEST

EN 16139:2013

Furniture - Strength, durability, stability and safety  
Requirements for non-domestic seating

Foam fire rating:  
CAL117-2013 - pass  
BS 5852 Crib5 - on request



CUSTOMISATION OPTIONS

FRAME OPTIONS

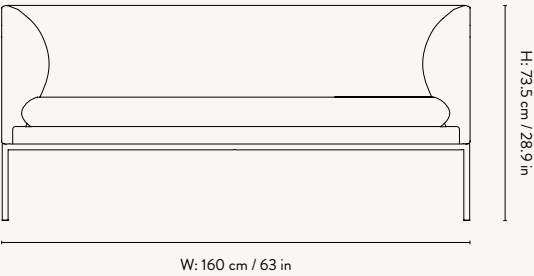
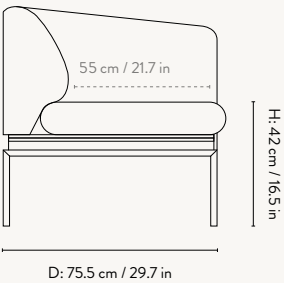


Black Cashmere

FABRIC QUALITIES



To see the specifications of each fabric and available colour assortment please go to overview on page 10







Turn Sofa 3-Seater — Fabric: Pasadena

TURN SOFA - 3-SEATER

Design by ferm LIVING in collaboration with Says Who

PRODUCT DETAILS

Manufactured in Lithuania.  
Registered design

DIMENSIONS

Height: 73.5 cm / 28.9 in  
Width: 200 cm / 78.7 in  
Depth: 75.5 cm / 29.7 in  
Seat height: 42 cm / 16.5 in  
Seat depth: 55 cm / 21.7 in  
Backrest height: 31.5 cm / 12.4 in  
Weight: 64 kg

MATERIALS & CONSTRUCTION

Backrest/seat: High resilience polyurethane foam on beech and plywood inner construction with No-Sag spring  
Frame: Powder coated steel  
Glides: Plastic glides

CARE

Please see Care & Maintenance guide on [www.fermliving.com](http://www.fermliving.com)

PACKSIZE

1

TEST

Foam fire rating:  
CAL117-2013 - pass  
BS 5852 Crib5 - on request



CUSTOMISATION OPTIONS

FRAME OPTIONS

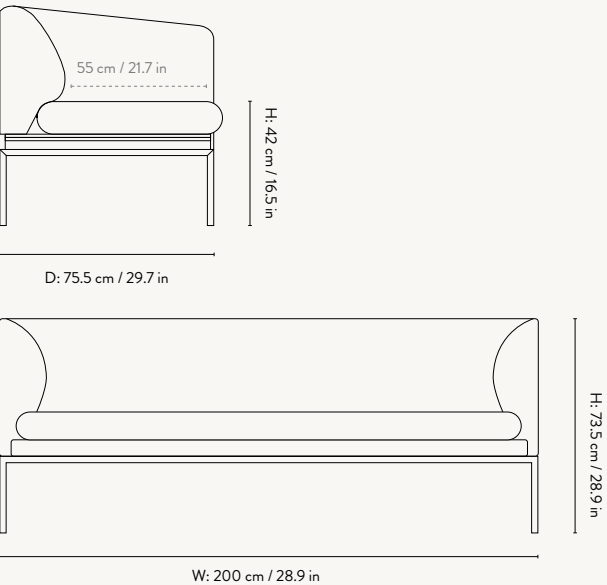


Black Cashmere

FABRIC QUALITIES



To see the specifications of each fabric and available colour assortment please go to overview on page 10







Turn Daybed — Fabric: Cotton Linen

### TURN DAYBED

Design by ferm LIVING in collaboration with Says Who

#### PRODUCT DETAILS

Manufactured in Lithuania.  
Registered design

#### DIMENSIONS

Height: 42 cm / 16.5 in  
Width: 190 cm / 74.8 in  
Depth: 80 cm / 31.5 in  
Seat height: 42 cm / 16.5 in  
Frame length: 186 cm / 73.2 in  
Weight: 38 kg

#### MATERIALS & CONSTRUCTION

Seat: High resilience polyurethane foam on beech and plywood inner construction with No-Sag spring  
Frame: Powder coated steel  
Glides: Plastic glides

#### CARE

Please see Care & Maintenance guide on [www.fermliving.com](http://www.fermliving.com)

#### PACKSIZE

1

#### TEST

Foam fire rating:  
CAL117-2013 - pass  
BS 5852 Crib5 - on request



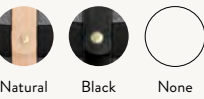
#### CUSTOMISATION OPTIONS

##### FRAME OPTIONS



Black Cashmere

##### HARNESS LEATHER STRAPS

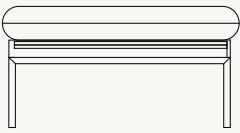


Natural Black None

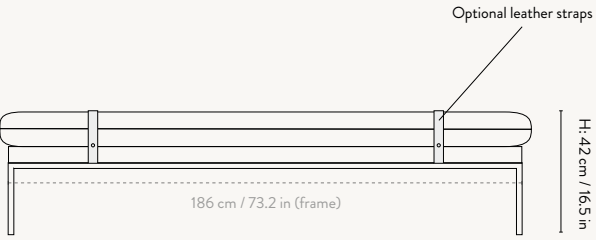
##### FABRIC QUALITIES



To see the specifications of each fabric and available colour assortment please go to overview on page 10



D: 80 cm / 31.5 in



186 cm / 73.2 in (frame)

W: 190 cm / 74.8 in (cushion)

Optional leather straps

H: 42 cm / 16.5 in



TURN 1-SEATER

Design by ferm LIVING in collaboration with Says Who

PRODUCT DETAILS

Manufactured in Lithuania.  
Registered design

DIMENSIONS

Height: 73.5 cm / 28.9 in  
Width: 80 cm / 31.5 in  
Depth: 75.5 cm / 29.7 in  
Seat height: 42 cm / 16.5 in  
Seat depth: 55 cm / 21.7 in  
Backrest height: 31.5 cm / 12.4 in  
Weight: 29.2 kg

MATERIALS & CONSTRUCTION

Backrest/seat: High resilience polyurethane foam on beech and plywood inner construction with No-Sag spring  
Frame: Powder coated steel  
Glides: Plastic glides

CARE

Please see Care & Maintenance guide on [www.fermliving.com](http://www.fermliving.com)

PACKSIZE

1

TEST

Foam fire rating:  
CAL117-2013 - pass  
BS 5852 Crib5 - on request



CUSTOMISATION OPTIONS

FRAME OPTIONS

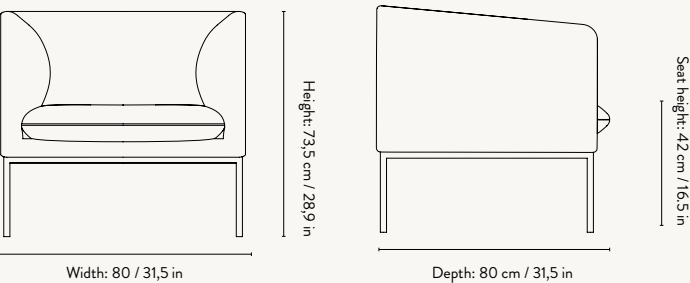


Black Cashmere

FABRIC QUALITIES



To see the specifications of each fabric and available colour assortment please go to overview on page 10



TURN POUF

Design by ferm LIVING in collaboration with Says Who

PRODUCT DETAILS

Manufactured in Lithuania.  
Registered design

DIMENSIONS

Height: 42 cm / 16.5 in  
Width: 80 cm / 31.5 in  
Depth: 80 cm / 31.5 in  
Seat height: 42 cm / 16.5 in  
Weight: 12 kg

MATERIALS & CONSTRUCTION

Seat: High resilience polyurethane foam on beech and plywood inner construction with No-Sag spring  
Frame: Powder coated steel  
Glides: Plastic glides

CARE

Please see Care & Maintenance guide on [www.fermliving.com](http://www.fermliving.com)

PACKSIZE

1

TEST

Foam fire rating:  
CAL117-2013 - pass  
BS 5852 Crib5 - on request



CUSTOMISATION OPTIONS

FRAME OPTIONS

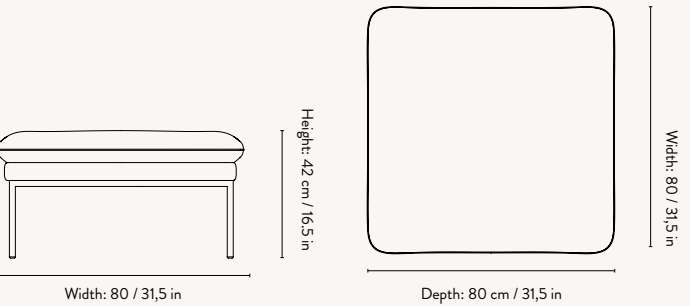


Black Cashmere

FABRIC QUALITIES



To see the specifications of each fabric and available colour assortment please go to overview on page 10



FABRIC & LEATHER OPTIONS

	TURN COLLECTION
Price Group 1	
Cotton Linen	•
Brushed	•
Price Group 2	
Faded Velvet	
Hot Madison	•
Cyber	•
Price Group 3	
Bouclé	•
Leather - Solid	
Pasadena	•
Louisiana	
Focus	•
Price Group 4	
Confetti Bouclé	
Wool Bouclé	
Tonus 4	•
Steelcut Trio 3	•
Rich Linen	
Price Group 5	
Hallingdal 65	•
Fiord 2	•
Price Group 6	
Leather - Envy	

FABRIC OPTIONS

Price Group 1

BRUSHED



Composition: 100% polyester  
Martindale: 90.000  
Lightfastness: 5 (5)  
Pilling: 5 (5)  
Sustainability: Free of heavy metals  
Fire rating: CAL 117: pass with treatment  
Crib 5: pass with treatment  
EN 1021 1/2: pass with treatment

Suitable for: Rico Collection  
Herman Collection  
Turn Collection

ferm LIVING colour selection:



Price Group 2

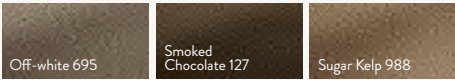
HOT MADISON



Composition: 63% cotton  
37% linen  
Martindale: 55.000  
Lightfastness: 4-5 (8)  
Pilling: N/A  
Supplier: JAB  
Fire rating: CAL 117: pass  
Crib 5: pass with treatment  
EN 1021 1/2: pass with treatment

Suitable for: Catena Collection  
Turn Collection

ferm LIVING colour selection:



See more colour options at jab.com

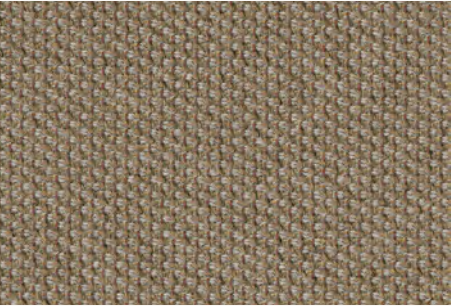
COTTON LINEN



Composition: 60% cotton  
40% linen  
Martindale: 24.000  
Lightfastness: 4 (8)  
Pilling: 4-5 (5)  
Fire rating: CAL 117: not pass  
Crib 5: pass with treatment  
EN 1021 1/2: pass with treatment

Suitable for: Catena Collection  
Herman Collection  
Turn Collection

CYBER



Composition: 100% post-consumer recycled polyester  
Martindale: 120.000  
Lightfastness: 7-8 (8)  
Pilling: 4-5  
Sustainability: STANDARD 100 by OEKO-TEX®  
EU Ecolabel

Supplier: Gabriel  
Fire rating: CAL117: pass  
Crib 5: pass with treatment  
EN 1021 1/2: pass

Suitable for: Herman Collection  
Turn Collection

ferm LIVING colour selection:



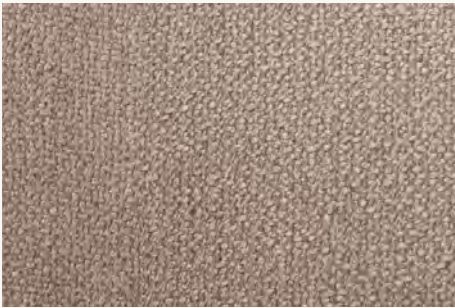
See more colour options at gabriel.com



# FABRIC OPTIONS

## Price Group 3

### BOUCLÉ

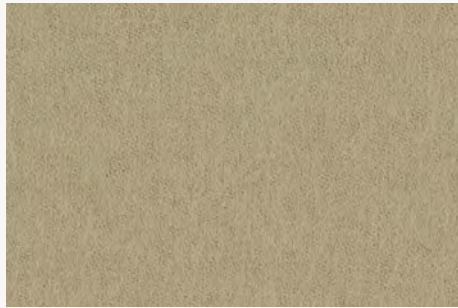


**Composition:** 35% acrylic, 24% polyester  
19% viscose, 14% cotton  
5% linen, 3% other fibers  
**Martindale:** 30.000  
**Lightfastness:** 4-5 (8)  
**Pilling:** 4 (5)  
**Fire rating:** CAL 117: pass  
Crib 5: pass with treatment  
EN 1021 1/2: pass  
**Suitable for:** Rico Collection  
Herman Collection  
Turn Collection

ferm LIVING colour selection:

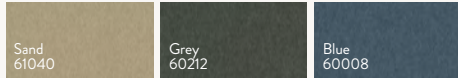


### FOCUS



**Composition:** 100% New Zealand wool  
**Martindale:** 100.000  
**Lightfastness:** 5-7 (8)  
**Pilling:** 4  
**Sustainability:** STANDARD 100 by OEKO-TEX®  
EU Ecolabel  
**Supplier:** Gabriel  
**Fire rating:** CAL117: pass  
Crib 5: pass with treatment  
EN 1021 1/2: pass  
**Suitable for:** Turn Collection

ferm LIVING colour selection:



See more colour options at [gabriel.dk](http://gabriel.dk)

### PASADENA

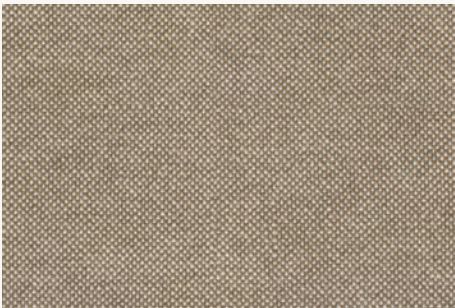


**Composition:** 34% linen, 27% viscose, 17% polyester,  
12% cotton, 8% wool, 2% acrylic  
**Martindale:** 30.000  
**Lightfastness:** 5 (8)  
**Pilling:** 4 (5)  
**Fire rating:** CAL 117: pass  
Crib 5: pass with treatment  
EN 1021 1/2: pass with treatment  
**Suitable for:** Catena Collection  
Herman Collection  
Turn Collection

# FABRIC OPTIONS

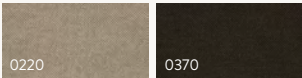
## Price Group 5

### HALLINGDAL 65



**Composition:** 70% new wool  
30% viscose  
**Martindale:** 100.000  
**Lightfastness:** 5-7 (8)  
**Pilling:** 3-4 (5)  
**Supplier:** Kvadrat  
**Sustainability:** EU Ecolabel  
Greenguard Gold  
**Fire rating:** CAL 117: pass  
Crib 5: pass  
EN 1021 1/2: pass  
**Suitable for:** Catena Collection  
Rico Collection  
Herman Collection  
Turn Collection

ferm LIVING colour selection:



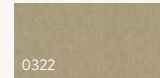
See more colour options at [kvadrat.dk](http://kvadrat.dk)

### FIORD 2



**Composition:** 92% wool  
8% nylon  
**Martindale:** 60.000  
**Lightfastness:** 6 (8)  
**Pilling:** 4-5 (5)  
**Supplier:** Kvadrat  
**Sustainability:** EU Ecolabel  
Greenguard Gold  
**Fire rating:** CAL 117: pass  
Crib 5: pass with treatment  
EN 1021 1/2: pass  
**Suitable for:** Herman Collection  
Turn Collection

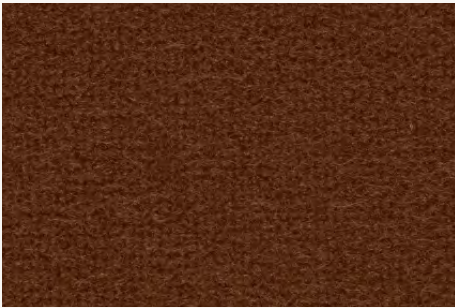
ferm LIVING colour selection:



See more colour options at [kvadrat.dk](http://kvadrat.dk)

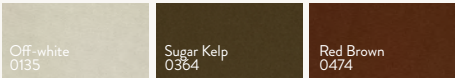
## Price Group 4

### TONUS 4



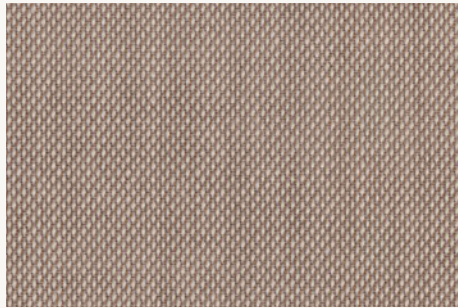
**Composition:** 90% new wool  
10% helanca  
**Martindale:** 100.000  
**Lightfastness:** 5-7 (8)  
**Pilling:** 3 (5)  
**Supplier:** Kvadrat  
**Sustainability:** EU Ecolabel  
Greenguard Gold  
**Fire rating:** CAL 117: pass  
Crib 5: pass with treatment  
EN 1021 1/2: pass  
**Suitable for:** Rico Collection  
Herman Collection  
Turn Collection

ferm LIVING colour selection:



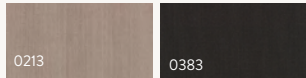
See more colour options at [kvadrat.dk](http://kvadrat.dk)

### STEELCUT TRIO 3



**Composition:** 90% new wool  
10% nylon  
**Martindale:** 100.000  
**Lightfastness:** 5-7 (8)  
**Pilling:** 3-4 (5)  
**Supplier:** Kvadrat  
**Sustainability:** EU Ecolabel  
Greenguard Gold  
**Fire rating:** CAL 117: pass  
Crib 5: pass with treatment  
EN 1021 1/2: pass  
**Suitable for:** Herman Collection  
Turn Collection

ferm LIVING colour selection:



See more colour options at [kvadrat.dk](http://kvadrat.dk)





## *Life is full of contrasts*

As we navigate expectations and dreams in the search for meaning and comfort, we long for a balanced life with room for chaos and calm, moments of reflection and times of joy. A place where we can be ourselves, realise the true value of things and feel at home.

Based on a passion for authentic design and clear functionality, we challenge ourselves to shape the future and take pride in creating products that help you balance the contrasts of life.

Our soft forms, rich textures and deep colours allow you to create an authentic and composed atmosphere, while avant-garde shapes, striking patterns and curious details add a touch of the unexpected.

From our base in Copenhagen, we work with artisans around the world, fusing our Scandinavian mindset with global skills and traditions. We take our responsibility to people and the planet seriously and expect the same of our partners.

We create collections of furniture, accessories and lighting, so you can create space to feel comfortably you.

Welcome home.



